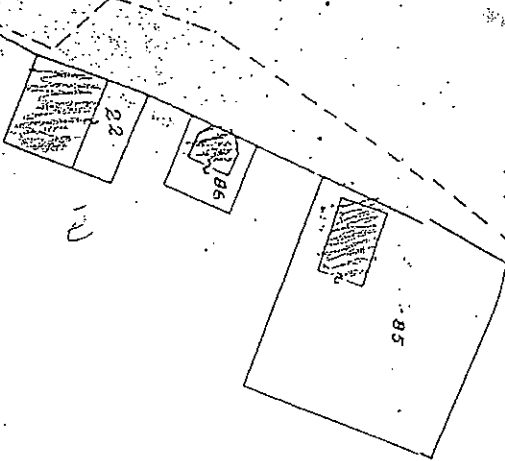


P  
R  
O  
V  
I  
N  
C  
E

G a r i b a l



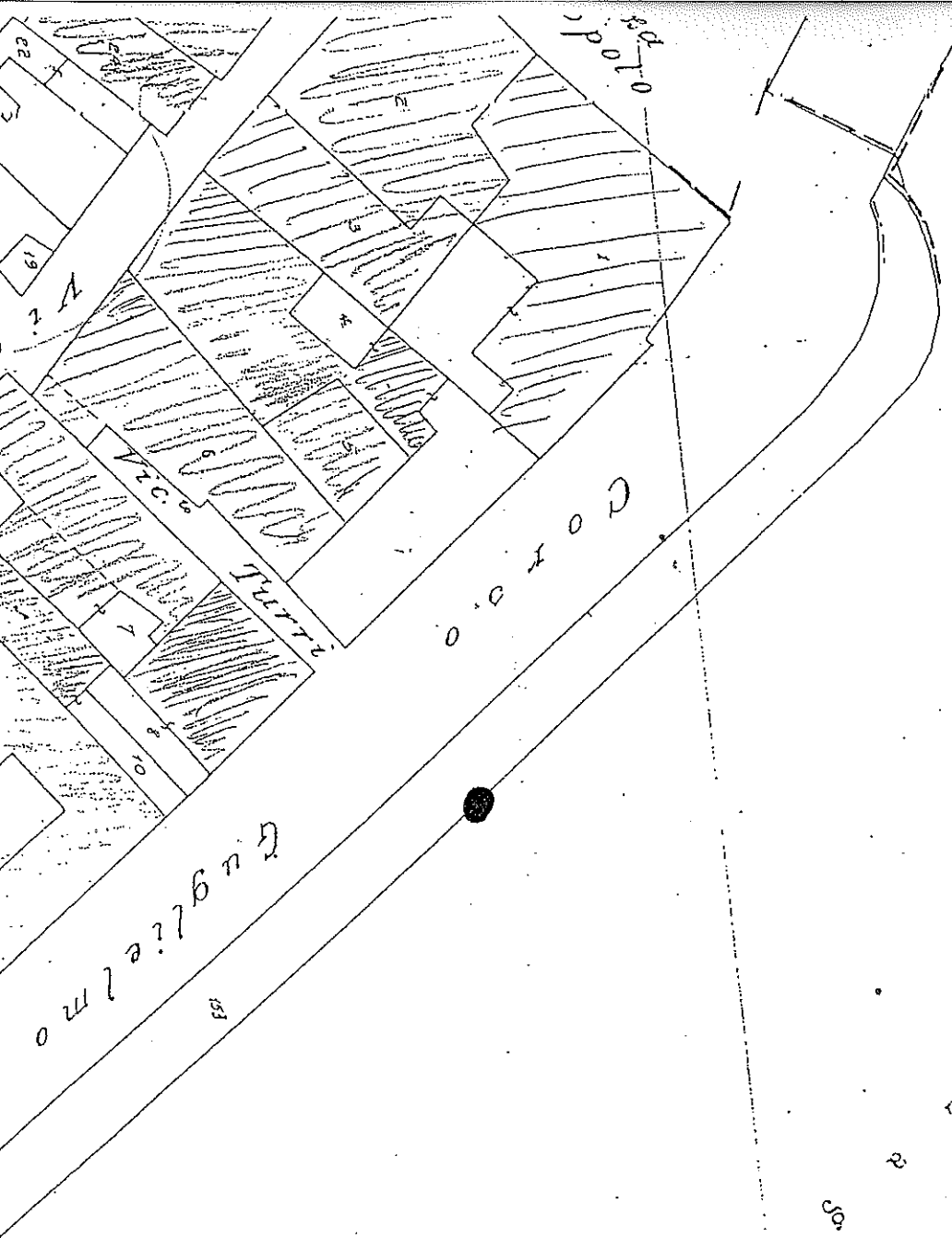
21

L a s s o

M a s s i o r e



FIG. 23



M. LINGENTE  
 N. 829 del 11 DIC 1985  
 in sub-delega ex art. 13 L.R. 20/89  
 dato alla autorizzazione  
 OTTICA EDILIZIA N. 8356  
 TECNICO REGIONALE